

**Jān-Mār  
2022**

# **LaPorte Community Federal Credit Union**



**NEW AUTO  
1.99 % UP TO  
72 MONTHS**

Borrow \$30,000 your monthly  
payment would be about  
\$442.40

Some Restrictions Apply



**La Porte Community Federal Credit Union**

**Members Update**



**Welcome Municipal  
Employees CU Members**

Moving Forward with Infinite Financial Possibilities



Multiple Locations to Better Serve You!

[www.laportecfcu.com](http://www.laportecfcu.com)

**Main Office**



1800 E Lincolnway  
La Porte, IN 46350  
219-326-8050

**Jefferson Branch**



1304 Jefferson Ave  
La Porte, IN 46350  
219-326-1698

**Michigan City Branch**



1315 Southwind Drive  
Michigan City, IN 46360  
219-879-1920

**Team Members**

Robbie Masterson	Chief Executive Officer
Kandi Tague	Chief Financial Officer
Karyn Campos	Operations Manager
Jarrold A. Allen	Marketing Director
Kristin Nunez	Branch Manager
Trish Gale	Branch Manager
Tracy Oldham	Member Solutions
Tiffany Ransbottom	Auditing Specialist
Diane Childress	Senior Loan Officer
Melissa Campos	Loan Officer
Karyssa Wagner	Loan Officer
Nikki Lestage	Member Service
Kellie Demchak	Member Service
Edith Forbes	Teller Supervisor
Amanda Sunderland	Teller Supervisor
Lauri Enochs	Teller Supervisor
Kenny Eslick	Teller
Becky Stanford	Teller
Courtney Koziatsek	Teller
Lisa Herald	Teller
Jerri Oyola	Teller
Megan Nowinski	Teller
Cheryl Leffler	Call Center Operator

## Employee Spotlight



Amanda has been with the credit union for two years. Amanda currently is our teller supervisor in our Michigan City Office. Her goal is to transition into the lending department. During her free time she enjoys spending time with her family

and fur babies. Amanda also enjoys painting, gardening, & hiking. Having Amanda is a great addition to the team and her work ethic speaks for itself! So be sure to stop out at Michigan City Branch and say hello to Amanda.



### Amanda Sunderland

Teller Supervisor

219-879-1920 Ext. 526

[amanda@laportecfcu.com](mailto:amanda@laportecfcu.com)

# LA PORTE PROUD!



 Like us on  
**Facebook**

**VOTED #1  
CREDIT UNION**





# Wayne Lottes Scholarship



## \$1,000

Application Deadline: Thursday  
March 31st, 2022

[www.laportecfcu.com/about/scholarships](http://www.laportecfcu.com/about/scholarships)

## Winter Wonder-Rates!

### Share Rates

Regular Savings, Christmas,  
Vacation, Special, & Kids  
Club .15% A.P.Y.

### Certificates of Deposit

Term	A.P.Y.
6 Month	.25% A.P.Y.
12 Month	.30% A.P.Y.
18 Month	.35% A.P.Y.
24 Month	.40% A.P.Y.
36 Month	.50% A.P.Y.
48 Month	.60% A.P.Y.
60 Month	.75% A.P.Y.

## ANNUAL BUSINESS MEETING

We invite our members and staff to gather and reflect on the previous year's successes and events. We also will review the financial state of the Credit Union. This gives you the chance to exercise your rights as a member-owner of the Credit Union by asking questions, voting, and getting to know the staff, Executive Team, and Board of Directors.

We will be serving Breakfast at 11 AM and the ballots will be on the Conference Room Tables for members to cast their votes/elect new directors, meeting to follow after breakfast. If there are no nominations from the floor the current board of directors will be reelected into a two year term.

**Date: April 23rd, 2022**

**Time: 11 AM -12PM**

**Location: Main Office  
1800 E Lincolnway  
La Porte, IN 46350**





Check out our website  
www.laportecfcu.com

Coolest Club in Town  
... Kids ONLY!

## Savvy Savers Kids Club

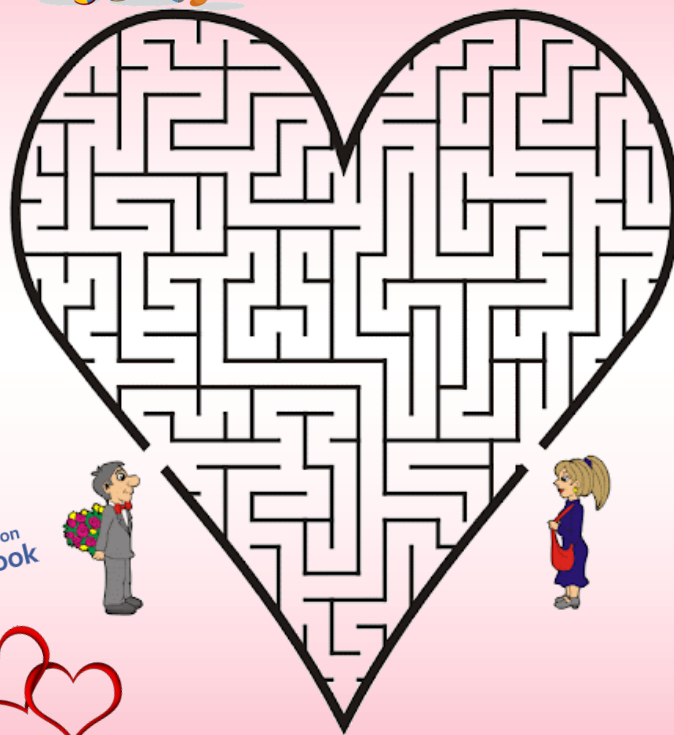
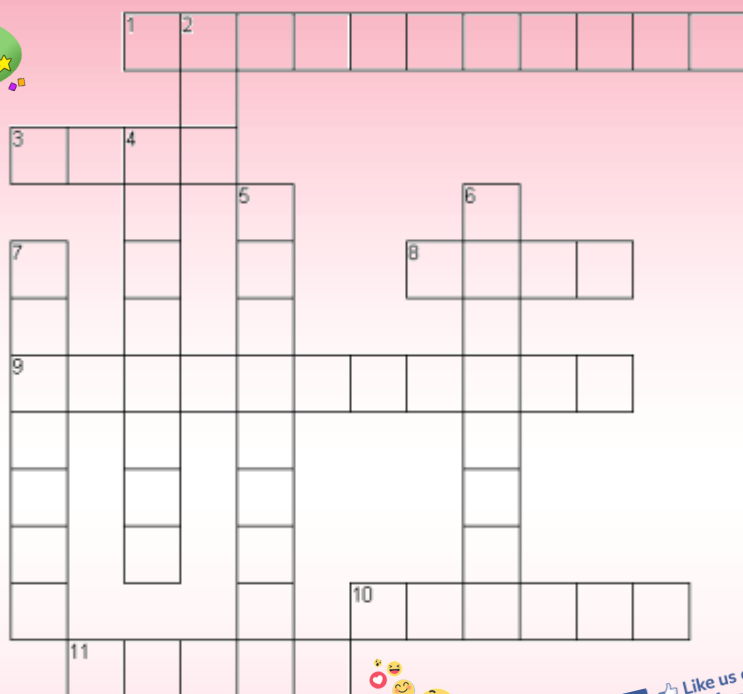
### Membership Requirements for Children

- 2 Forms of Identification  
Social Security card  
Birth Certificate
- \$5.00 to open account  
12 Years and Under

### Membership Requirements for Parents

- 3 Forms of Identification  
State ID  
Social Security Card  
Birth Certificate  
OR  
Debit/Credit Card

# New Year Crossword Puzzle



### Across

1. We bring in the new year with a \_\_\_\_.
3. A symbol of the old year is father \_\_\_\_.
8. The New Year symbol is a \_\_\_\_.
9. We use \_\_\_\_ to make lots of noise on New Year's Eve.
10. We often see a \_\_\_\_ with floats and marching  
bands on New Years.
11. The day the new month starts is the \_\_\_\_.

### Down

2. December 31st is also know as New Year's \_\_\_\_.
4. At the stroke of \_\_\_\_ it is New Year's Day.
5. We watch \_\_\_\_ that display bright lights and sounds.
6. We record dates and months on this \_\_\_\_.
7. The month of the new year is \_\_\_\_.



# You're A-maze-ing

## St Patrick's Day Word search



BLARNEY  
LUCK  
MAGICAL  
SHAMROCK  
MARCH  
EMERALD  
IRELAND  
IRISH  
CLOVER  
POTATO  
CELTIC  
SAINT PATRICK  
LEPRECHAUN  
GREEN  
GOLD  
RAINBOW  
BAGPIPE  
COINS

